

MVE Stock Series



Features include

- Wide neck opening
- Lowest liftover height
- Largest LN₂ Capacity
- Optional Battery Backup



Featuring the TEC 3000

The MVE Stock Series provides the ultimate in security for the breeding industry and are primarily used to store semen and embryos. The freezers are designed for pull and pack shipment, with a wide neck opening for easy access. Although engineered for liquid storage, most MVE Stock Series can be used to store in vapor.

www.chartbiomed.com
844-MVE-CRYO



	MVE 103***	MVE 808	MVE 816P-2T-190	MVE 1318	MVE 1842P-150	MVE 1877P-2T-150
Maximum Storage Capacity						
1.2 & 2 ml Vials (Internally Threaded)	-	11,700	10,500	20,800	-	-
Quantity of Large Racks 100 cell boxes	-	12	-	24	-	-
Quantity of Mini Racks 25 cell boxes	-	4	-	8	-	-
Number of Shelves per Rack	-	9	-	8	-	-
High Security Straw Capacity (0.5 ml)	7,728	37,296	31,584	76,104	-	347,424
Number of Canisters (73 mm)	23	74	94	151	-	517
Goblets/Canister : Straws/Goblet	2:168	3:168	2:168	3:168	2:168	4:168
Number of SUC-1 Canisters (2.5"x2.5"x11)	22	61	115	129	294	539
Number of 1.2 ml Vials on Canes	3,168	8,784	16,560	18,576	42,336	77,616
Number of 2.0 ml Vials on Canes	1,760	4,880	9,200	10,320	23,520	43,120
Number of 1/2 cc Straws 10/cane	6,820	18,910	35,650	39,990	91,140	167,090
Performance						
LN ₂ Capacity w/o Inventory L est.	39	230	381	482	872	1456
LN ₂ Capacity at Platform Vapor L est.	-	-	56	-	-	250
Unit Dimensions						
Neck Opening in. (mm)	16.0 (406)	25.0 (634)	12.5 (317)	35.5 (901)	25.0 (635)	25.0 (635)
Usable Internal Height in. (mm)	12.0 (305)	22.0 (558)	13.0 (330) per level	18.8 (479)	13.0 (330)	13.0 (330) per tray
Inner Diameter in. (mm)	16.00 (406)	28.30 (720)	28.70 (728) top tier 27.70 (702) bottom tier	39.60 (1007)	56.1 (1425)	56.25 (1429) top and bottom tiers
Overall Height with Auto Fill in. (mm)	16.4 (415)***	53.5 (1359)	58.0 (1473)	58.7 (1491)	51.1 (1296)	64.6 (1639)
Door Width Requirement** in. (mm)	18 (457)	31 (787)	32 (813)	42 (1067)	60 (1524)	60 (1524)
Weight Empty* lb. (kg)	48 (22)	250 (114)	475 (215)	469 (213)	1167 (530)	1721 (781)
Weight Liquid Full* lb. (kg) est.	117 (53)	660 (300)	1155 (524)	1328 (602)	2721 (1234)	4316 (1958)

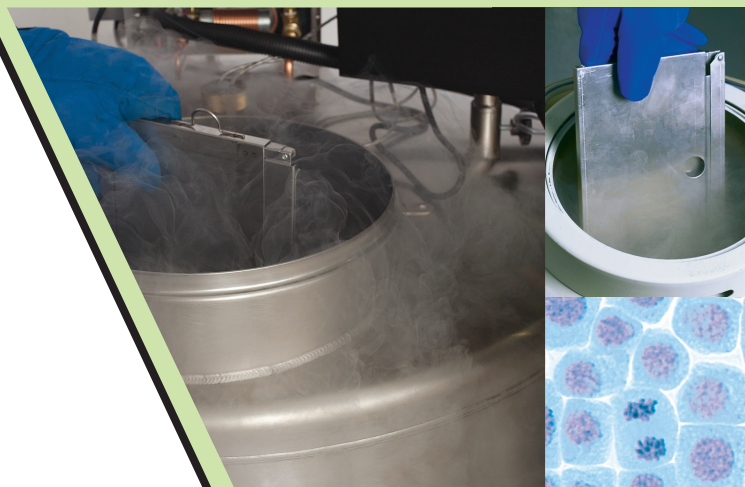
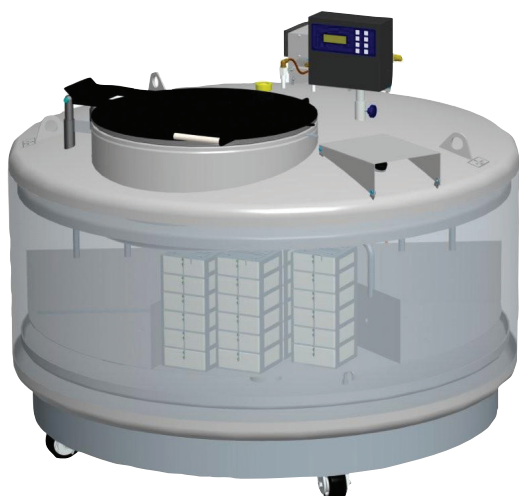
TWO Year Parts Warranty • FIVE Year Vacuum Warranty

Conforms to MDD 93/42/EEC, the Medical Device Directive for the EU. Freezer systems UL/C-UL Listed.

* Without inventory

** Minimum width required for vessel to pass through opening. Footprint may vary. Contact Tech Service for detailed drawings.

*** Not available with Auto Fill.



Visit www.chartbiomed.com for more information.

© 2019 Chart Inc. reserves the right to discontinue its products, or change the prices, materials, equipment, quality, descriptions, specifications and/or processes to its products at any time without prior notice and with no further obligation or consequence. All rights not expressly stated herein are reserved by us, as applicable.