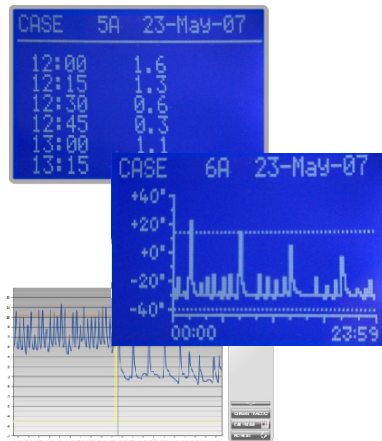


DATAcentre Standalone monitoring & alarm system

Wireless & wired solutions

- No software required
- Wireless & wired sensors
- Standalone unit with LCD
- Web browser access
- In built storage
- Graphs & data
- Various alarm options
- Optional LAN connection



The standalone monitoring alarm system which can monitor and alarm practically anything; including temperature down to liquid nitrogen levels, humidity, CO₂, O₂, door status as well as much more.

There are various alarm options including visual & audible alarms, autodiallers, email alarms and connection to BMS systems. Printers can also be connected to the unit. It is also possible to put a delay period for each monitored device to prevent "false alarms".

Each monitored device has a set of alarm thresholds. If the threshold is exceeded an alarm can be generated via the various alarm outputs.

Battery life can last up to 5 years for sensors.

The system comes with a base centre which can connect to up to 120 wireless or 120 wired sensors. Multiple base centres are also possible if required.

On the base centre, you can view real time and historical data in graphical or text format, view & acknowledge alarms as well as having the ability to configure the unit, providing you have logged in with the correct level of access.

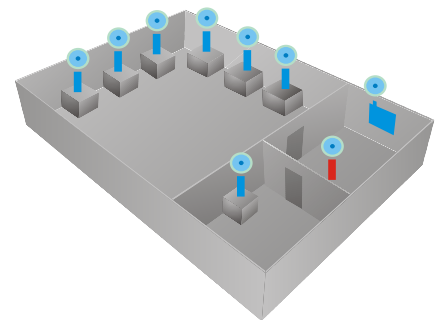
The base centre can store information itself and can have an optional SD card which stores data for up to 10 years.

It is also possible to connect a USB device to export historical data. Various file formats can be selected including HTML (so that the data can be read using a web browser) or CSV format (to import into a spreadsheet).

Every alarm is logged internally with the time and date and the value that the sensor reached. Alarm history can be viewed at any time via the base centre or web browser. To complete the audit trail, the unit can be configured so that alarms have to be acknowledged by entering a pass code. The details of the user who acknowledge the alarm are also stored with the alarm event. Any action made by a user which requires a password is also logged to the system.

In the event that the signal from the transmitter is not strong enough to reach the base centre, repeater modules can be used to repeat or "boost" the signal.

With multiple repeaters the units create a mesh type network, which in the event that a signal path becomes unavailable will automatically re-route.



In the event of a problem with the base centre, the system can simply be restored to another base centre without the need to re-configure the devices.

The system comes preconfigured so they can be tested before dispatch to allow simpler installation.

There are various levels of access from view only to complete editing and alarm management.

Optionally you can connect the base centre to a LAN port in the building, or directly to a PC which will allow remote access to the unit with a web browser locally or from anywhere in the world. Using a web browser you can connect to the base centre to have an overview of how the system is operating with links to all other functions.